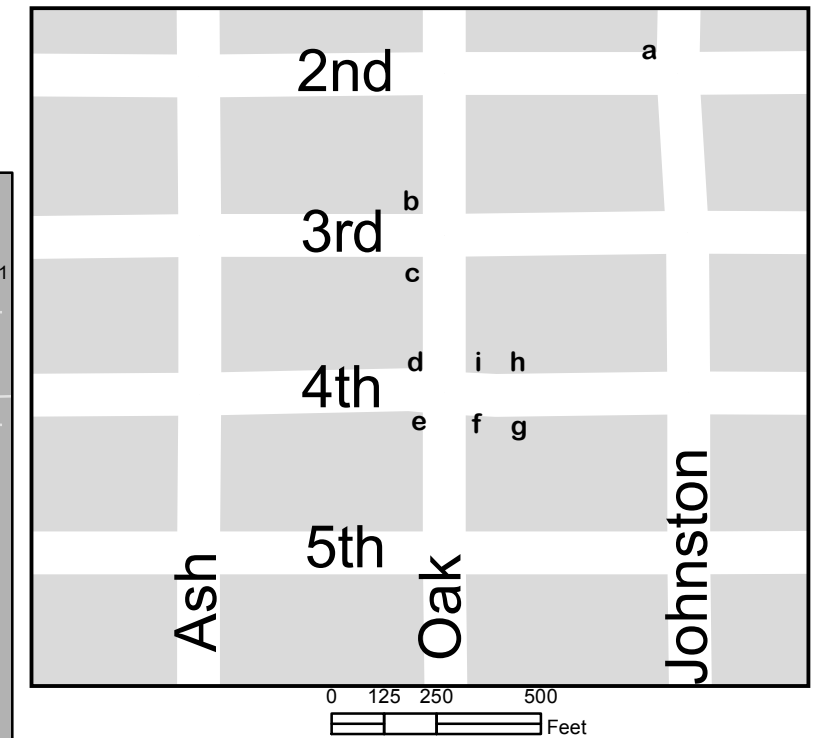
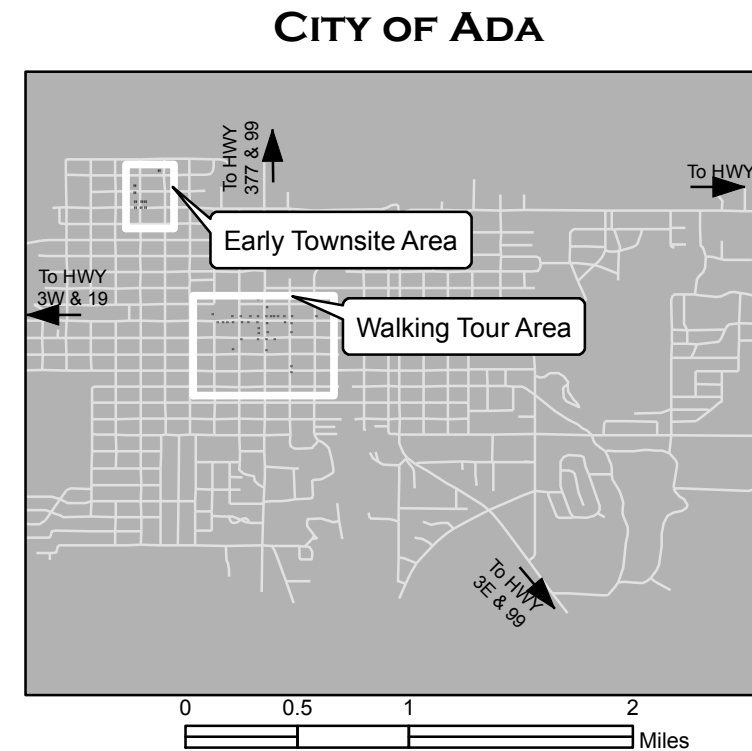
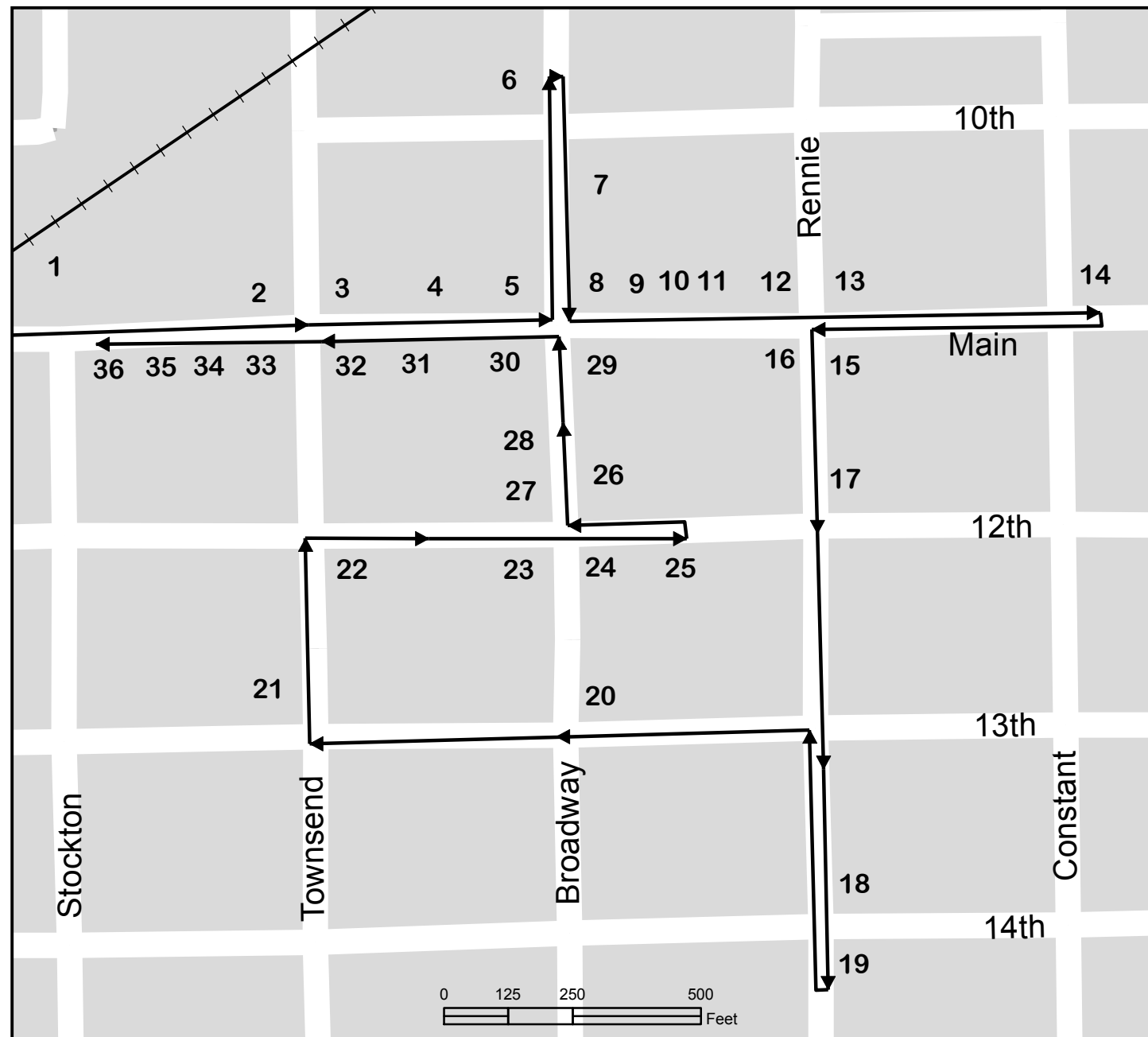


HISTORICAL WALKING TOUR OF DOWNTOWN ADA, OK



EARLY TOWNSITE MAP OF ADA

- a. Blackburn Sawmill and Cotton Gin
- b. Nolen/Cabeen Drug Store
- c. Raney Blacksmith
- d. McKinsey Grocery
- e. Kerr, Ross and Co. General Store
- f. Reed, Fullerton, and Castleberry General Store
- g. Sprague Studio Tent
- h. Reed's Store/ Reed's Home
- i. Floyd & Dags Store

- | | | |
|----------------------------------------|--------------------------------------------|------------------------------------------------|
| 1. Railroad Depot | 15. Duncan Building/Pioneer Telephone | 28. Railway Express |
| 2. Federal Courthouse/Opera House | 16. Harris Hotel/Ode to Byrd's Mill Spring | 29. First National Bank |
| 3. McSwain Theater | 17. Montgomery Ward | 30. Rollow Building |
| 4. Post Office | 18. Barringer Grocery | 31. Simpson's Surprise Store |
| 5. Ada National Bank | 19. Ada Public Library | 32. Carpenter's Drugs |
| 6. Round Bale Cotton Gin | 20. Sugg Clinic | 33. Citizens National Bank/Oklahoma State Bank |
| 7. The Ada News | 21. Memorial Convention Hall | 34. Haynes Hardware |
| 8. Merchants & Planters Bank | 22. The Colonnade | 35. Reed-Harrison Mercantile |
| 9. 25,000 Club | 23. Central Fire Station/City Hall | 36. Brown Hotel |
| 10. Evans Hardware | 24. Aldridge Hotel | |
| 11. Shaw's Department and Nickel Store | 25. Criswell Funeral Home | |
| 12. Pontotoc Building | 26. American Building | |
| 13. Thompson Book Store | 27. Masonic Lodge | |
| 14. Blake Coca-Cola Bottling Company | | |



Map Designed by David Dill
Advised by Dr. Mark Micozzi
East Central University
Department of Cartography/Geography
May 2006